



## **KRISCO Engineering Ltd**

Unit A2 Oldmixon Crescent

Weston Super Mare

Somerset BS24 9AY

Tel 01934 413800 Fax 01934 412620

Email; sales@kriscoengineering.co.uk

### **Recent Projects and Client List**

#### **Recent Projects**

- Submersible Cages for Divers
- Vitreous Enameled Panels for London Underground
- Dockside Crane Cabins
- Smelting Works Crane Cabins
- Screw Conveyor
- Offshore Skids, Frameworks & Vessels
- Stainless Steel Food Manufacturing Equipment
- Heavy Duty Equipment for Quarrying
- Ducting Work
- Acoustic Enclosures
- Analyzer Housing for Pollution Control
- Nuclear Power Station Control Room Desks & Enclosures
- Paper Industry Control Cabinets & Equipment
- Leading Car Manufacturer Paint Shop Control Consoles
- Armed Forces, Dockside & Onboard Enclosures & Consoles
- Mechanical Handling Equipment

#### **Recent Clients**

- Power Generation Companies ( BNFL )
- Water Treatment Companies
- Environmental Control of Waterways
- Petro-Chemical Industry
- Instrumentation Industry
- London Underground
- Hazardous Area Specialist
- Car Manufacturers
- Local Police Authorities

#### **Links:-**

[www.servomex.com](http://www.servomex.com)

[www.spacecooling.co.uk](http://www.spacecooling.co.uk)

[www.siemens-dematic.co.uk](http://www.siemens-dematic.co.uk)

[www.yjl.co.uk](http://www.yjl.co.uk)

[www.hydro-international.co.uk](http://www.hydro-international.co.uk)

[www.belvalves.co.uk](http://www.belvalves.co.uk)

[www.alderley.com](http://www.alderley.com)

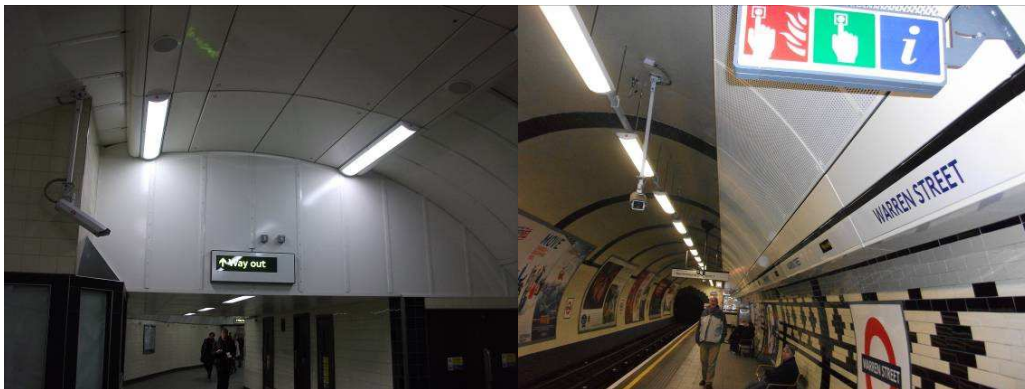


## Previous Projects

### September 2010

Warren Street Station Value £890,000.00  
Customer London Underground, Project managed by Vinci

To complete works on station to bring up to completion this involved Bulkheads and special infill panels Both PPC and Vitreous Enamel amounting to in excess of 1200 panels designed manufactured and installed in a 7 week time frame we had up to 70 fitters on sit during this time. The station was completed on time and on budget. We were congratulated by LUL for this achievement.



### June 2010

Kings Cross Station Value £400,000  
Customer London Underground Project Managed by Galldris

To Design Manufacture & Install Glazed Balustrade and Handrails for Step Free Access at Kings Cross Station and CMS in the



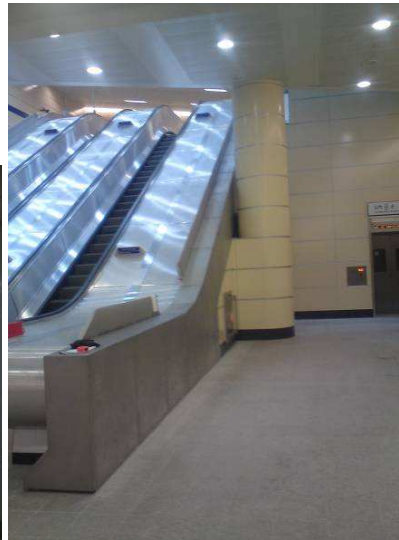


**November 2010**

**Stratford Station**  
**Customer Westfield**

**Value £300,000**  
**Project Managed by Delatin**

*In the Western Passageway to design manufacture and install Vitreous Enamel Wall Panels, Lighting Booms and Bespoke Corrugated Insulated Ceiling Panels, To design manufacture and install Stainless Steel Cladding to Escalators in Ticket Hall*



**December 2009**

**Kings Cross Station**  
**Customer London Underground**

**Value£1,200,000**  
**Main Contractor Balfour Beatty**

*To Design Manufacture and Install Stainless Steel Poster and Cladding Panels Install*

